

London Borough of Merton
100 London Road
Morden
Surrey
SM4 5DX

Scale 1/2837

Date 23/11/2015

Wimbledon Stadium

This map is based on Ordnance Survey material with the permission of Ordnance Survey on behalf of HMSO. Unauthorised reproduction infringes Crown Copyright and may lead to prosecution or Civil proceedings. London Borough of Merton 100019259. 2012.

DEVELOPMENT CONTROL

© Copyright
 The copyright in this drawing is vested in Sheppard Robson and no license or other permission is granted to any third party whether by name or otherwise to reproduce or use the drawing in any form or by any means without the prior written consent of Sheppard Robson.

DO NOT SCALE FROM THIS DRAWING
 The contractor shall check and verify all dimensions on site and report discrepancies in writing to Sheppard Robson before proceeding with work.

FOR ELECTRONIC DATA BASE
 The contractor shall ensure that all dimensions are taken from the information provided in the electronic data base. All dimensions shall be taken from those values stated in text on the drawing.

AREA MEASUREMENT
 The contractor shall ensure that all measurements are taken from the centre of the road or the centre of the building. All measurements shall be taken from the centre of the road or the centre of the building. All measurements shall be taken from the centre of the road or the centre of the building.

NOTES:
 Stadium Design by Wilson Owens Owens for AFC Wimbledon



REV. DATE AMENDMENT

CLIENT



SHEPPARD ROBSON

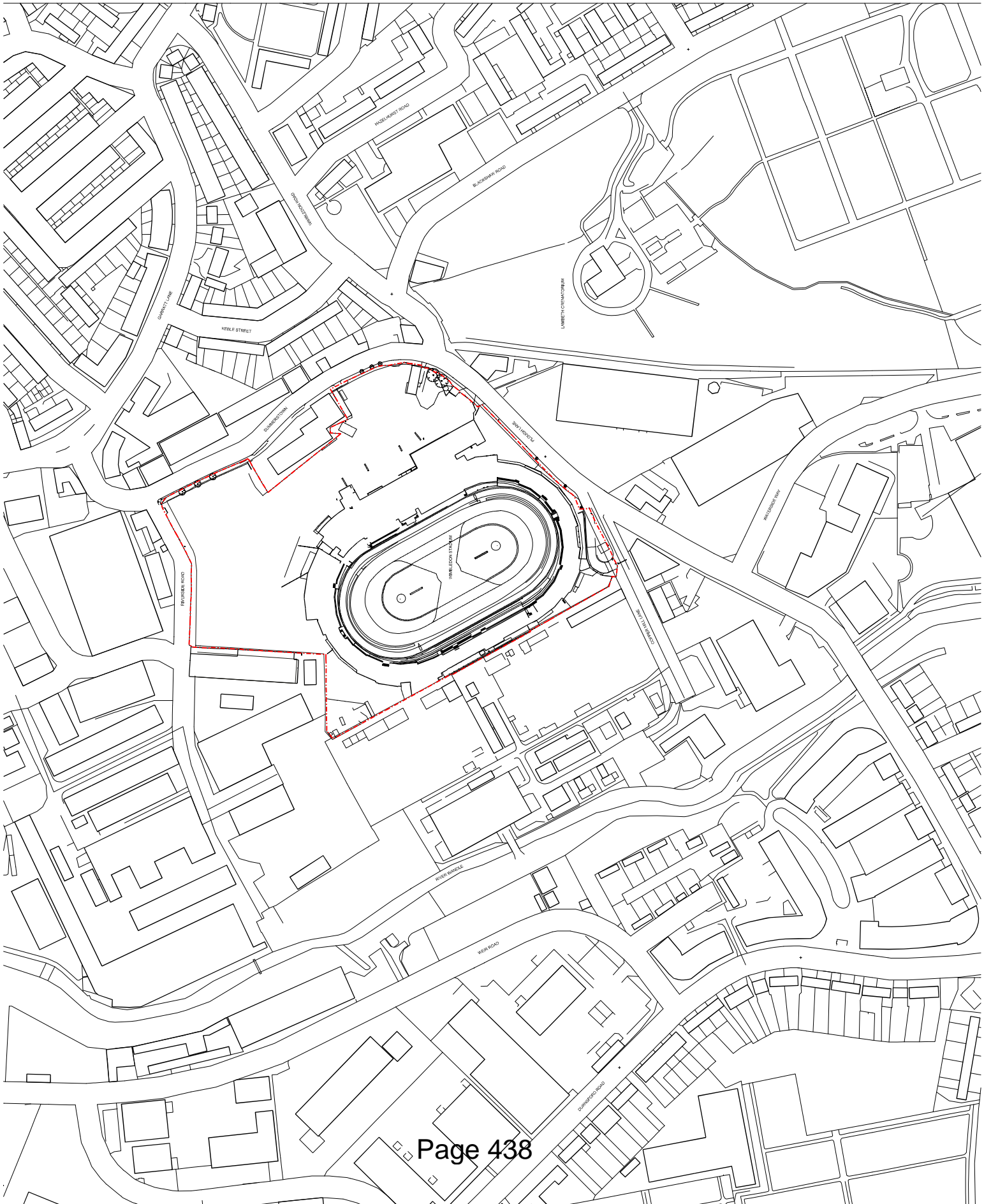
27 Parkway, Camden Town, London, NW1 7PU
 T: +44 (0)20 7624 0000 E: info@sheppardrobson.com

THE WIMBLEDON STADIUM DEVELOPMENT

SCALE: 1:1250 DATE: 24.10.2014
 CHECKED: CH AUTHORED: CH
 DRAWN: CH

TITLE
 SITE LOCATION PLAN
 EXISTING

PLANNING
 4740-00-001



© Copyright
The copyright in this drawing is vested in Sheppard Robson and no license or other permission is granted to any third party whether by written or oral agreement to reproduce or use the drawing in any way.

DO NOT SCALE FROM THIS DRAWING
The contractor shall check and verify all dimensions on site and report discrepancies in writing to Sheppard Robson before proceeding with work.

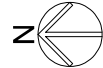
FOR ELECTRONIC DATA BASE
This drawing is intended to be used as a data base for the production of information products. It may be used for this purpose provided that the user has obtained the necessary permissions from those who created the data base.

AREA MEASUREMENT
The area of any site shown on this drawing shall be measured by a qualified professional surveyor of the completed site. Any reduction in area shall be made on the basis of the actual measurements on site. The contractor shall ensure that the area of any site shown on this drawing is in accordance with the actual measurements on site. The contractor shall ensure that the area of any site shown on this drawing is in accordance with the actual measurements on site.

NOTES
Stadium Design by Wilson Owens Owens for AFC Wimbledon

REV. **DATE** **AMENDMENT**

NOTES
Stadium Design by Wilson Owens Owens for AFC Wimbledon



REF PLAN

CLIENT



SHEPPARD ROBSON

27 Parkway, Cannon Town, London, NW1 7PU
T: +44 (0)20 7626 2000 E: info@sheppardrobson.com

PROJECT
THE WIMBLEDON STADIUM DEVELOPMENT

SCALE 1:1250
DATE 24.10.2014
FW

CHECKED CH
CREATED CH
AUTHORISED CH

TITLE
SITE LOCATION PLAN
PROPOSED

SCALE 1:1250
DATE 24.10.2014
FW

CHECKED CH
CREATED CH
AUTHORISED CH



© Copyright 2014 Wilson Owens Owens for AFC Wimbledon. All rights reserved. No part of this document may be reproduced, stored in a retrieval system, or transmitted in any form or by any means, electronic, mechanical, photocopying, recording, or by any information storage and retrieval system, without the prior written permission of Wilson Owens Owens for AFC Wimbledon.

DO NOT SCALE FROM THIS DRAWING
The contractor shall check and verify all dimensions on site and report discrepancies in writing to Sheppard Robson before proceeding work.

FOR ELECTRONIC DATA BASE
Dimensions are given in millimetres. All dimensions shall be rounded up from those values stated in text on the drawing.

AREA MEASUREMENT
Areas are given in square metres. All areas are subject to final planning and conservation area consent and developer's rights to site assembly.

NOTES
Stadium Design by Wilson Owens Owens for AFC Wimbledon

RESIDENTIAL BUILDING 'C'
Total cycle parking spaces: 32

SQUASH CLUB
Total cycle parking spaces: 20

RETAIL UNIT
Total cycle parking spaces: 6

NORTH-SOUTH STREET
Total cycle parking spaces for visitors: 30

REV. DATE AMENDMENT

CLIENT

DATE 24.10.2014

CHECKED CH

AUTHORISED CH

DATE 24.10.2014

PROJECT THE WIMBLEDON STADIUM DEVELOPMENT

77 Parkway, Cannon Town, London, NW1 7PU
Tel: +44 (0)20 7463 4000 Fax: +44 (0)20 7463 4001
www.sheppardrobson.com

SCALE 1:500

TITLE MASTER PLAN

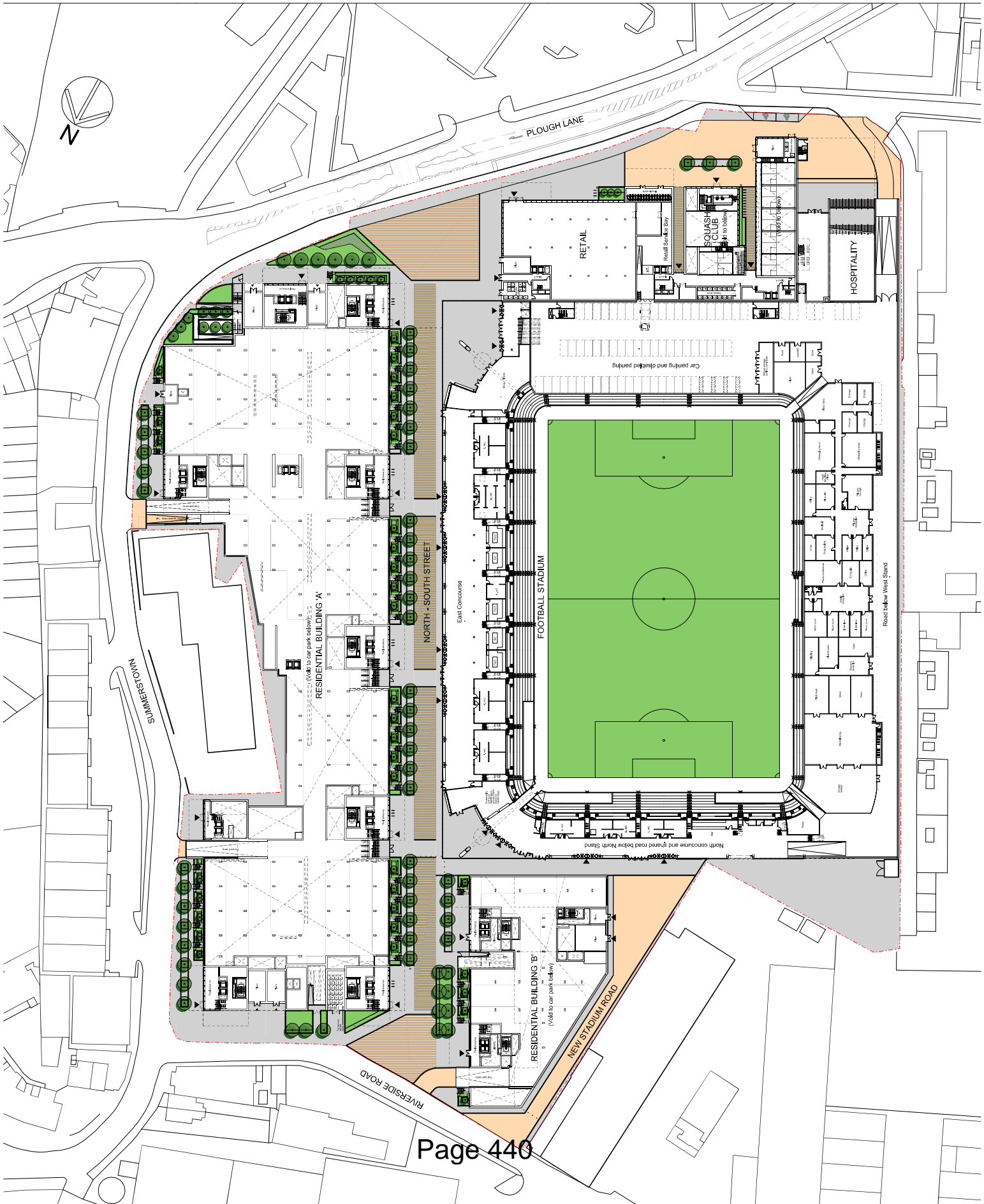
LOWER GROUND LEVEL

PLANNING

4740-00-409

REV.

4



© Copyright 2014 Wilson Owens Owens for A/C Wimbledon. All rights reserved. No part of this document may be reproduced, stored in a retrieval system, or transmitted in any form or by any means, electronic, mechanical, photocopying, recording, or by any information storage and retrieval system, without the prior written permission of Wilson Owens Owens for A/C Wimbledon.

DO NOT SCALE FROM THIS DRAWING. Dimensions are given in millimetres and are to be used for construction purposes only. All dimensions are given in millimetres unless otherwise stated. Dimensions are given in millimetres unless otherwise stated. Dimensions are given in millimetres unless otherwise stated.

FOR ELECTRONIC DATA BASE: Dimensions are given in millimetres and are to be used for construction purposes only. All dimensions are given in millimetres unless otherwise stated. Dimensions are given in millimetres unless otherwise stated.

AREA MEASUREMENT: Areas are given in square metres and are to be used for construction purposes only. All areas are given in square metres unless otherwise stated. Areas are given in square metres unless otherwise stated.

NOTES:

1. Stadium Design by Wilson Owens Owens for A/C Wimbledon

2. Residential Building 'C'

3. Total cycle parking spaces: 32

4. Squash Club

5. Total cycle parking spaces: 20

6. Residential Building 'A'

7. Total cycle parking spaces: 8

8. North-South Street

9. Total cycle parking spaces for Motors: 30

REV. DATE AMENDMENT

CLIENT

DATE 24.10.2014

CHECKED CH

AUTHORISED CH

PLANNING

4740-00-425

REVISIONS

DATE 24.10.2014

CHECKED CH

AUTHORISED CH

PLANNING

4740-00-425

REVISIONS

DATE 24.10.2014

CHECKED CH

AUTHORISED CH

PLANNING

4740-00-425

REVISIONS

DATE 24.10.2014

CHECKED CH

AUTHORISED CH

PLANNING

4740-00-425

REVISIONS

DATE 24.10.2014

CHECKED CH

AUTHORISED CH

PLANNING

4740-00-425

REVISIONS

DATE 24.10.2014

CHECKED CH

AUTHORISED CH

PLANNING

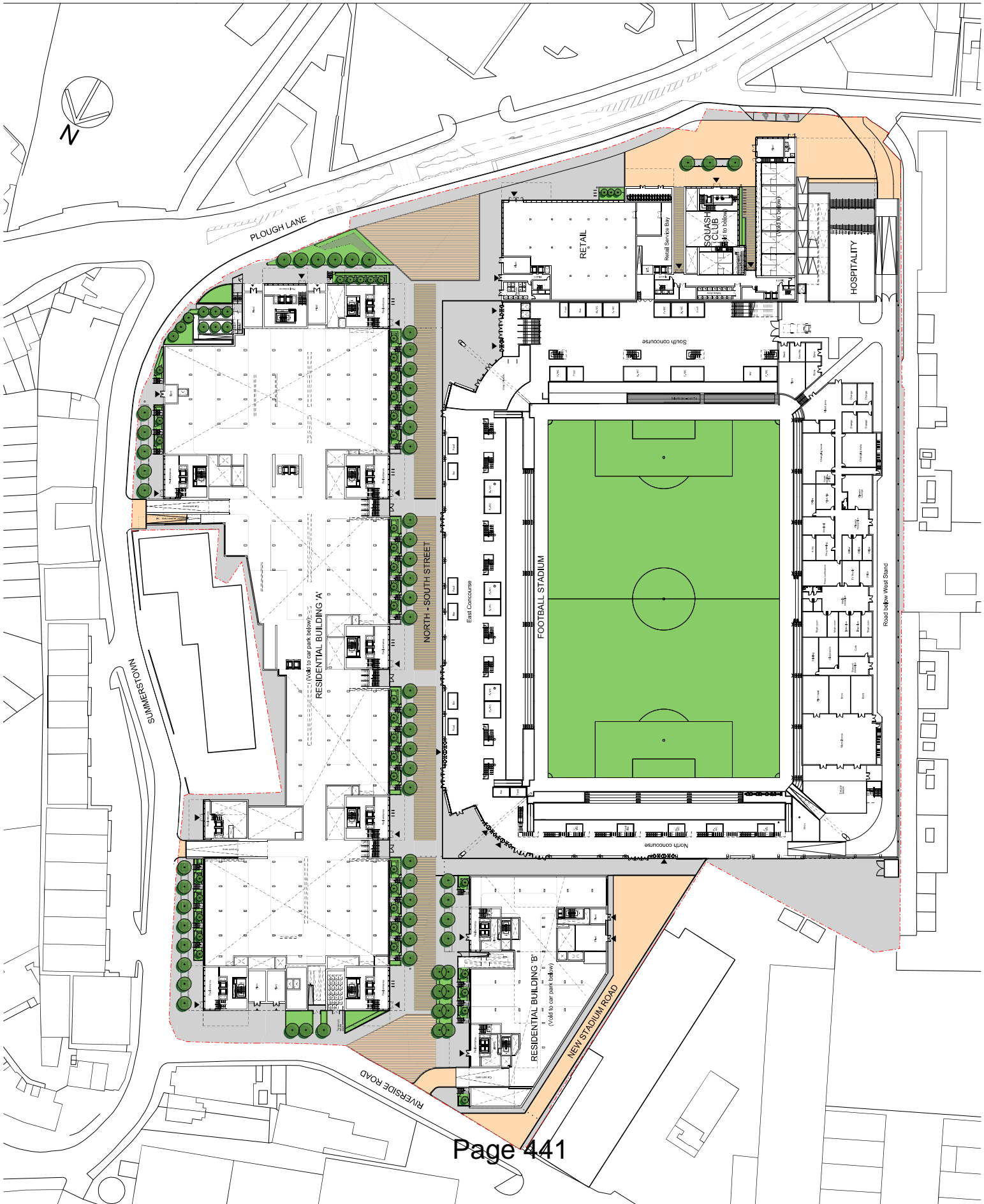
4740-00-425

REVISIONS

DATE 24.10.2014

CHECKED CH

AUTHORISED CH



© Copyright 2014
 The copyright in this document is vested in Sheppard Robson and its licensees or assignees. Any part of this document, or any information contained herein, may not be reproduced, stored in a retrieval system, or transmitted in any form or by any means, electronic, mechanical, photocopying, recording, or by any information storage and retrieval system, without the prior written permission of Sheppard Robson.

DO NOT SCALE FROM THIS DRAWING
 The contractor shall check and verify all dimensions on site and report discrepancies in writing to Sheppard Robson before proceeding with work.

FOR ELECTRONIC DATA BASE
 Dimensions are given in millimetres, to three decimal places, unless otherwise stated. All dimensions are subject to the accuracy of the measurements. All dimensions shall be taken from the centre of the line unless otherwise stated.

AREA MEASUREMENT
 Areas are given in square metres, to two decimal places, unless otherwise stated. Areas are measured in accordance with the provisions of the Building Act 2004 and the Building Regulations 2006. Areas are measured in accordance with the provisions of the Building Act 2004 and the Building Regulations 2006. Areas are measured in accordance with the provisions of the Building Act 2004 and the Building Regulations 2006.

NOTES
 Stadium Design by Wilson Owens Owens for AFC Wimbledon
RESIDENTIAL BUILDING 'A'
 Total cycle parking spaces: 52

REV. DATE AMENDMENT

CLIENT

77 Parkway, Camden Town, London, NW1 7PU
 T: +44 (0)20 7424 4000
THE WIMBLEDON STADIUM DEVELOPMENT

DATE: 24.10.2014
 CHECKED: CH
 AUTHORIZED: CH

TITLE: MASTER PLAN
 UPPER GROUND LEVEL

PLANNING
 4740-00-410

REV.



SHEPPARD ROBSON

77 Parkway, Camden Town, London, NW1 7PU
 T: +44 (0)20 7424 4000

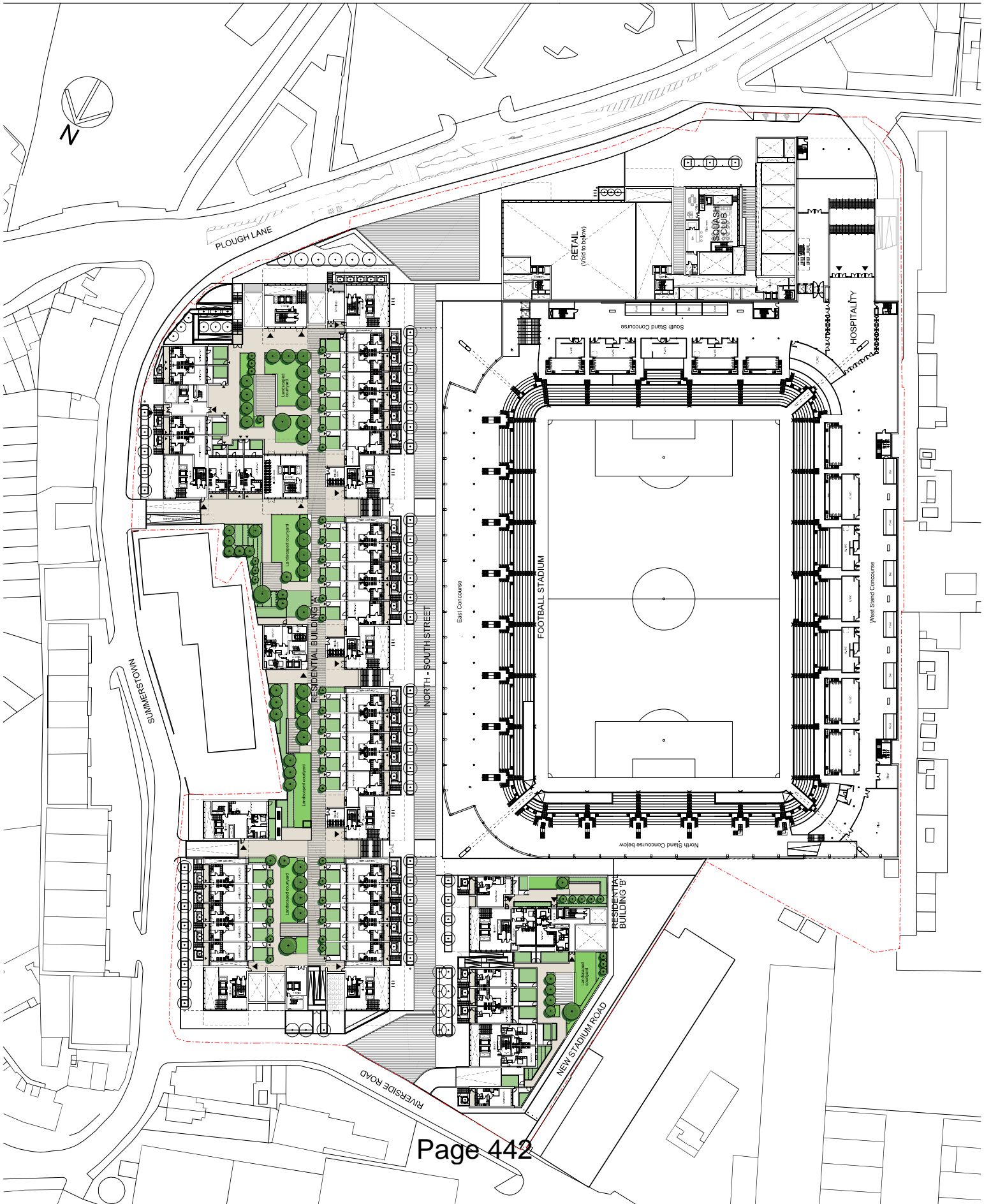
DATE: 24.10.2014
 CHECKED: CH
 AUTHORIZED: CH

TITLE: MASTER PLAN
 UPPER GROUND LEVEL

PLANNING
 4740-00-410

REV.

REV.



© Copyright
The copyright in this drawing is vested in Sheppard Robson and its licensees or assignees. Any use of this drawing, or any part thereof, without the written consent of Sheppard Robson is prohibited. This drawing is for general reference only.

DO NOT SCALE FROM THIS DRAWING
The contractor shall check and verify all dimensions on site and report discrepancies in writing to Sheppard Robson before proceeding work.

FOR ELECTRONIC DATA BASE
This drawing is intended to be used as a 'true copy' and shall not be interpreted for measurement. All dimensions shall be taken from the original drawing and shall not be taken from any other source.

AREA MEASUREMENT
All areas are measured in accordance with the current edition of the Survey of England and Wales. Any voids to be made on the site of the development shall be measured in accordance with the current edition of the Survey of England and Wales. All areas are subject to the current edition of the Survey of England and Wales. All areas are subject to the current edition of the Survey of England and Wales. All areas are subject to the current edition of the Survey of England and Wales.

NOTES
Stadium Design by Wilson Owens Owens for A/C Wimbledon

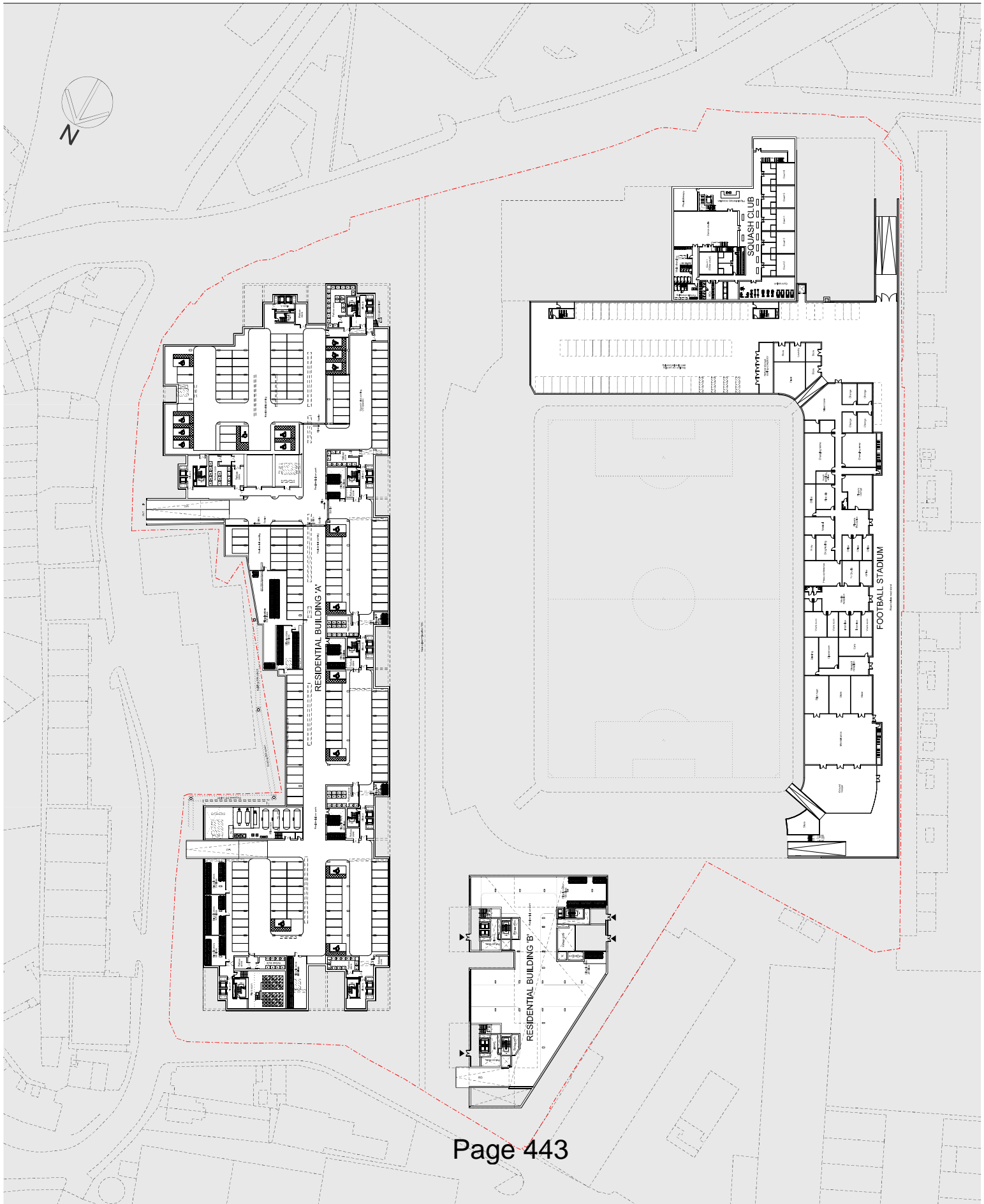
RESIDENTIAL BUILDING 'A' (17 accessible spaces)
Number of electric car charging points: 42 (provision for future expansion to 77)
Total cycle parking spaces: 824

RESIDENTIAL BUILDING 'B' (6 accessible spaces)
Number of electric car charging points: 6 (provision for future expansion to 12)
Total cycle parking spaces: 136

Total cycle parking spaces A+B: 960

SQUASH CLUB
Total car parking spaces: 19

FOOTBALL STADIUM
Total car parking spaces: 74 (6 accessible spaces)



REV. DATE AMENDMENT

CLIENT

CLIENT



SHEPPARD ROBSON

27 Parkway, Cannon Town, London, NW1 7PU
T: +44 (0)20 7611 5000 F: +44 (0)20 7611 5001
www.sheppard-robson.com

THE WIMBLEDON STADIUM DEVELOPMENT

SCALE: 1:500 DATE: 26.05.2015 AC
DRAWN BY: CH CHECKED BY: CH AUTHORIZED BY: CH

MASTER PLAN
BASEMENT LEVEL

PROJECT NO: 4740-00-463
DATE: 26.05.2015

© Copyright 2014 Wilson Owens Owens for AFC Wimbledon. All rights reserved. No part of this document may be reproduced, stored in a retrieval system, or transmitted in any form or by any means, electronic, mechanical, photocopying, recording, or by any information storage and retrieval system, without the prior written permission of Wilson Owens Owens for AFC Wimbledon.

DO NOT SCALE FROM THIS DRAWING
The contractor shall check and verify all dimensions on site and report discrepancies in writing to Sheppard Robson before proceeding work.

FOR ELECTRONIC DATA BASE
Dimensions are given in millimetres, to three significant figures, unless otherwise stated. All dimensions are to the face of the work unless otherwise stated. Dimensions are given in millimetres, to three significant figures, unless otherwise stated. Dimensions are given in millimetres, to three significant figures, unless otherwise stated.

AREA MEASUREMENT
Areas are given in square metres, to three significant figures, unless otherwise stated. Areas are given in square metres, to three significant figures, unless otherwise stated. Areas are given in square metres, to three significant figures, unless otherwise stated.

NOTES
1. Stadium Design by Wilson Owens Owens for AFC Wimbledon

RESIDENTIAL BUILDING 'C'
Total cycle parking spaces: 32

SQUASH CLUB
Total cycle parking spaces: 20

RETAIL UNIT
Total cycle parking spaces: 8

NOTES
1. Stadium Design by Wilson Owens Owens for AFC Wimbledon

RESIDENTIAL BUILDING 'C'
Total cycle parking spaces: 32

SQUASH CLUB
Total cycle parking spaces: 20

RETAIL UNIT
Total cycle parking spaces: 8

NOTES
1. Stadium Design by Wilson Owens Owens for AFC Wimbledon

RESIDENTIAL BUILDING 'C'
Total cycle parking spaces: 32

SQUASH CLUB
Total cycle parking spaces: 20

RETAIL UNIT
Total cycle parking spaces: 8

NOTES
1. Stadium Design by Wilson Owens Owens for AFC Wimbledon

RESIDENTIAL BUILDING 'C'
Total cycle parking spaces: 32

SQUASH CLUB
Total cycle parking spaces: 20

RETAIL UNIT
Total cycle parking spaces: 8

NOTES
1. Stadium Design by Wilson Owens Owens for AFC Wimbledon

RESIDENTIAL BUILDING 'C'
Total cycle parking spaces: 32

SQUASH CLUB
Total cycle parking spaces: 20

RETAIL UNIT
Total cycle parking spaces: 8

NOTES
1. Stadium Design by Wilson Owens Owens for AFC Wimbledon

RESIDENTIAL BUILDING 'C'
Total cycle parking spaces: 32

SQUASH CLUB
Total cycle parking spaces: 20

RETAIL UNIT
Total cycle parking spaces: 8

NOTES
1. Stadium Design by Wilson Owens Owens for AFC Wimbledon

RESIDENTIAL BUILDING 'C'
Total cycle parking spaces: 32

SQUASH CLUB
Total cycle parking spaces: 20

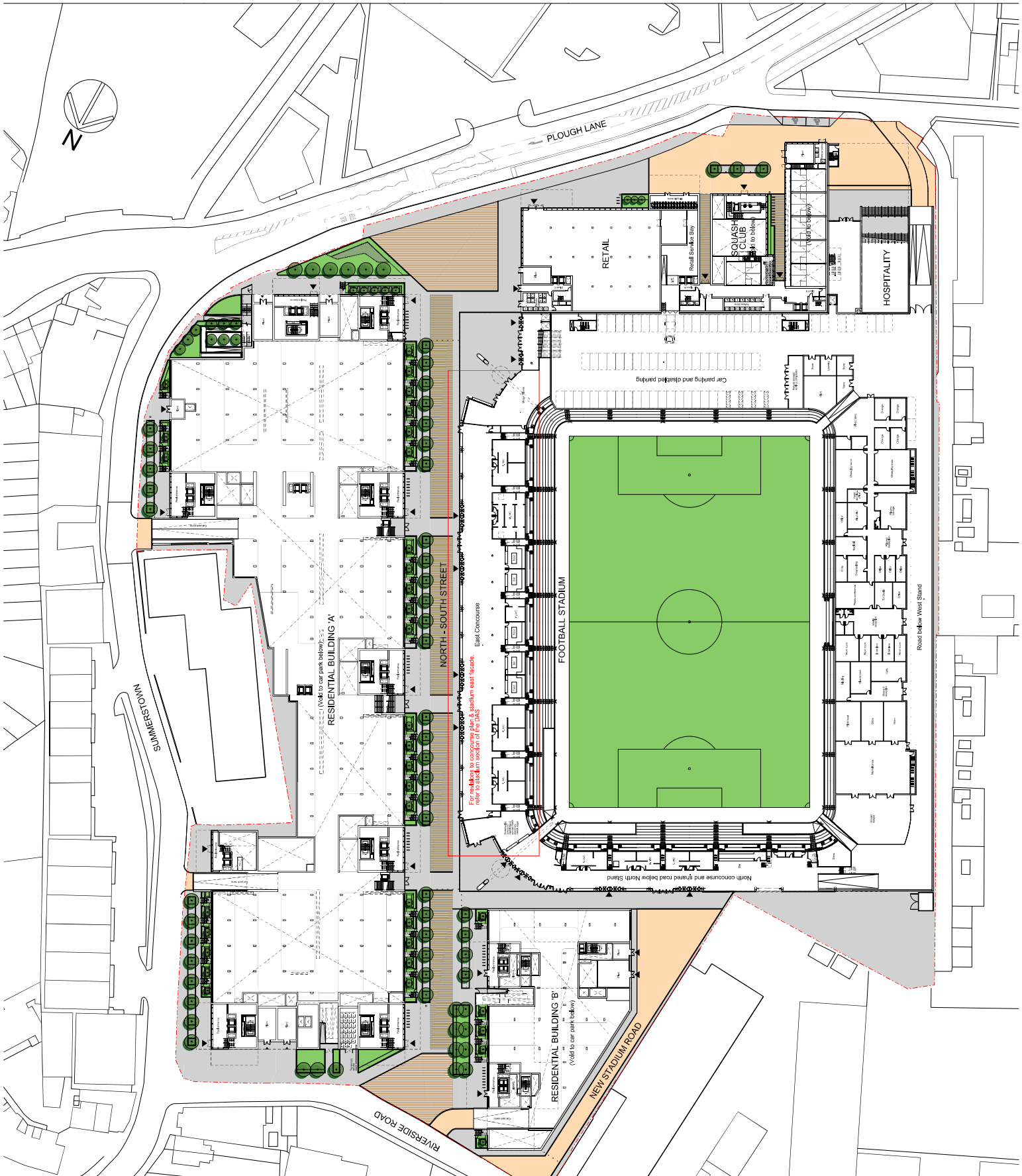
RETAIL UNIT
Total cycle parking spaces: 8

NOTES
1. Stadium Design by Wilson Owens Owens for AFC Wimbledon

RESIDENTIAL BUILDING 'C'
Total cycle parking spaces: 32

SQUASH CLUB
Total cycle parking spaces: 20

RETAIL UNIT
Total cycle parking spaces: 8



SHEPPARD ROBSON

27 Paternoster Row, London, EC4M 3TU
T: +44 (0)20 7323 3300 E: info@sheppardrobson.com

THE WIMBLEDON STADIUM DEVELOPMENT

DATE: 24.10.2014
CHECKED: CH
AUTHORISED: CH

MASTER PLAN
LOWER GROUND LEVEL

PLANNING
4740-00-453